

## Installation and Maintenance

### • Installation

SGG PLANILAQUE EVOLUTION can only be used in interior applications and must comply with current national regulations.

SGG PLANILAQUE EVOLUTION can be fixed:

- mechanically, either into glazing channels or trims, or with appropriate fixing screws.
- adhesively, using neutral translucent adhesives, or double-sided white adhesive pads. If in doubt of the compatibility of the adhesive, it is essential to test its reaction with the lacquer (and safety film backing if appropriate). We strongly recommend also using mechanical restraints, such as top and bottom j-channels, in conjunction with any adhesive glazing.

SGG PLANILAQUE EVOLUTION must not be fitted directly in front of nor behind a strong source of heat, eg a cooker hob.

### • Maintenance

Clean regularly with a soft, clean cloth and a regular glass cleaning product (neutral and non-abrasive).

### • Tips for successful installation!

Whatever technique is used for fixing SGG PLANILAQUE EVOLUTION, you must always:

- install the product in front of an opaque surface, with the lacquered face towards the wall.
- fix the lacquered glass to a supporting wall or surface that is true and flat, clean, dry and free of any aggressive agents.
- place any of the light coloured lacquered glasses in front of a uniformly pale surface.
- allow a gap of 1 - 2mm between the edges of two glass panels.
- ensure compliance with current national regulations.
- avoid locating the glass too close to intense sources of heat. If used near to a heater for example, the glass must not be exposed to a temperature of more than 50°C. In kitchens, do not allow the glass to come into direct contact with flames or strong heat sources (e.g. ovens, cooker hobs, very hot utensils or pans) as this could the product to crack or discolour over a period of time.
- ensure that water is not allowed to collect behind the glass, either by allowing sufficient drainage and ventilation, or alternatively seal the perimeter with a suitable material provided the wall behind the SGG PLANILAQUE EVOLUTION is kept perfectly dry.

## SGG PLANILAQUE EVOLUTION SAFE

### • Safety glass

A safety film can be applied to the back of the lacquered glass. In the event of breakage, the glass remains adhered to the film, reducing the risk of injury.

### • Installation

SGG PLANILAQUE EVOLUTION SAFE

Please refer to instructions above. If adhesively glazed, ensure direct contact between the glass and the adhesive pads. The use of silicone adhesive is prohibited.

Distributor

The colours illustrated are for indicative purposes only. Printing techniques do not make it possible to reproduce the exact colour of the lacquered glass on paper. SGG PLANILAQUE EVOLUTION, SGG PLANILAQUE EVOLUTION SAFE and all other devices and logos are registered trademarks of Saint-Gobain.



Printed on 160gsm Coccoon Offset, an extra-white certified FSC 100% recycled paper using vegetable based inks

SAINT-GOBAIN  
GLASS

SGG PLANILAQUE<sup>®</sup>  
EVOLUTION

*High durability  
lacquered glass*



SAINT-GOBAIN GLASS DESIGN

SAINT-GOBAIN  
GLASS

Saint-Gobain Glass UK Ltd  
Weeland Road, Eggborough  
East Riding of Yorkshire  
DN14 0FD  
Tel: 01977 666100  
Fax: 01977 666203

[www.saint-gobain-glass.com](http://www.saint-gobain-glass.com)

[glassinfo.uk@saint-gobain-glass.com](mailto:glassinfo.uk@saint-gobain-glass.com)



SAINT-GOBAIN GLASS DESIGN

# SGG PLANILAQUE® EVOLUTION

*A touch of refinement for interiors...*

## Description

SGG PLANILAQUE EVOLUTION is a lacquered glass with an opaque and coloured appearance, attained by depositing and baking highly resistant lacquer onto the rear surface of the glass.

## Applications

SGG PLANILAQUE EVOLUTION unites coloured lacquer with the brilliance of glass. It brings colour and ambiance to interiors and is particularly suitable for more demanding locations, such as bathrooms and kitchens.

In homes, offices, hotels, shops and museums, for example, SGG PLANILAQUE EVOLUTION creates smooth, homogenous surfaces as wall-panelling, in furniture and in wardrobe and cupboard doors.

## Advantages

### • Inspiring modern-day design

SGG PLANILAQUE EVOLUTION introduces colour and light, conveying a bright and creative appearance for walls and furniture.

Enhanced by the glass, the colour brightens up interiors and animates surroundings with reflections and brilliance.

### • A durable and flawless finish

As the lacquer is applied to the back of the glass, it is protected from damage, ensuring durability of the SGG PLANILAQUE EVOLUTION colours. Its brilliance is far superior to that of gloss paints.

### • Resistance to humidity

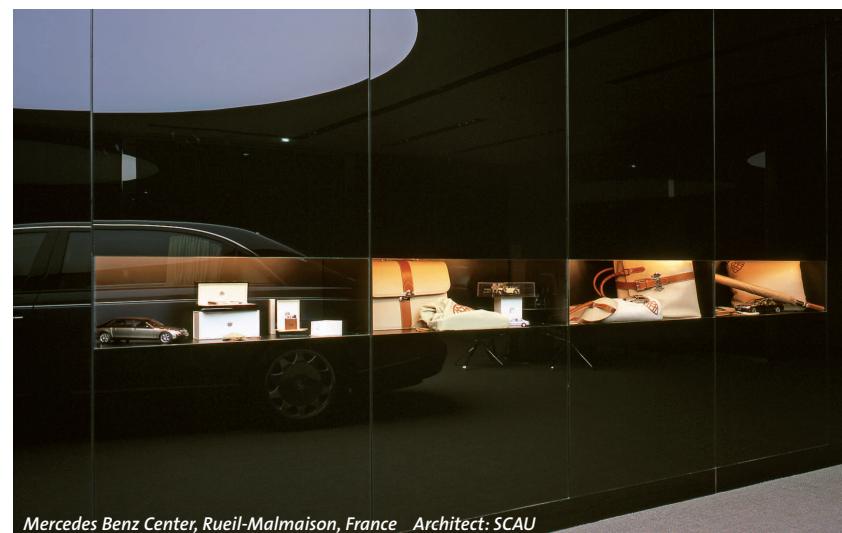
Thanks to the special composition of the lacquer, SGG PLANILAQUE EVOLUTION can be used in high humidity rooms, such as kitchens and bathrooms.

### • Safety

Where the use of safety glass is required, a safety film-backed version is available, SGG PLANILAQUE EVOLUTION SAFE.



Albion Riverside, London Architect: Foster and Partner



Mercedes Benz Center, Rueil-Malmaison, France Architect: SCAU



Car dealership, Paris, France Architect: SCAU



Cascade Hi-Tech, Paris, France

Intérieur d'Aujourd'hui, Paris, France

*Two new shades for a contemporary look and style...*

### Titan Grey - elegant and serene

This sophisticated colour complements and contrasts modern materials such as leather, wood and slate.

### Flame Red - cutting edge design

Create an impact with this vivid, striking and intense Flame Red. It is the must-have colour for contemporary interiors.



SGG 02  
Ivory



SGG 12  
Extra-White



SGG 08  
Light Blue



SGG 137  
Flame Red



SGG 170  
Light Grey



SGG 19  
Titanium Grey



SGG 01  
Almond Green



SGG 03  
Solar Yellow



SGG 21  
Opera Red



SGG 20  
Black



SGG 09  
Aqua Blue



SGG 15  
Mint Green

## Range

The SGG PLANILAQUE EVOLUTION range comprises twelve references; five light shades, contrasting with bold colours and intense black and grey.

These radiant and stylish colours are in harmony with natural materials, such as wood, metal and stone.

**Thickness:** 4 and 6 mm

**Dimensions:** 3210 x 2400 mm  
For other thicknesses and stock sheet sizes, please contact us.

**Weight:** 10 kg/m<sup>2</sup> for 4mm  
15kg/m<sup>2</sup> for 6 mm

## Processing

SGG PLANILAQUE EVOLUTION can be cut, edgeworked and drilled like ordinary mirrored glass. When cutting the glass, place the sheet with the lacquered face down on a clean cutting table to avoid damaging the lacquer.

SGG PLANILAQUE EVOLUTION can be customised by cold-painting decorative patterns or logos onto the glass surface. It can also be sandblasted and engraved. Different effects can be achieved, depending on whether the glass or lacquered face is treated.

## Sustainability

SGG PLANILAQUE EVOLUTION helps to maintain a clean and non-polluted environment. It complies with the strictest regulations relating to the control of emissions of Formaldehyde and other Volatile Organic Compounds (VOCs).

\* Tested to Norm ISO 16 000.  
Reference: France - Saisine Afsset n°2004/011

## Fire Resistance

SGG PLANILAQUE EVOLUTION meets the requirements of Class B-s1-d0 (previously M1) concerning its resistance to fire.